

LOGISTICS PARK

WAREHOUSE NEAR SOHNA, GURUGRAM

M/s SLJ SOLUTION LOGISTICS LLP
Village Sehswala, At Sohna Taoru Road

INTRODUCTION

- M/s SLJ SOLUTION LOGISTICS LLP has come up with a Logistics Park having **covered area** of over **1.10 lac sq.Ft or 1,10,000 sq .ft. extendable to 1,65,000 sq.ft.** in a single box on **land area** of approx. **7.50 Acres**. Construction & development work of the project is in final stages.
- Warehouse is placed at a **prime location** having its **connectivity from KMP and Delhi Vadodara Expressway**. Its placed strategically connecting Gurugram, Delhi, Faridabad, Palwal, Bhiwadi and main cities of UP such as Noida, Ghaziabad, Mathura, Aligarh. The Warehouse is designed to withstand seismic, gravity loads , wind loads etc. ensuring you safety and a safe working environment.
- Ventilators/Louvers have been placed as per zonal direction of wind flow and skylights as per rotation of sun with respect to earth's rotation .

FRONT ELEVATION OF ENTRY GATE



OUR SITE LOCATION:





SCAN OUR QR CODE



Satellite Image
of our Site Location

Legend

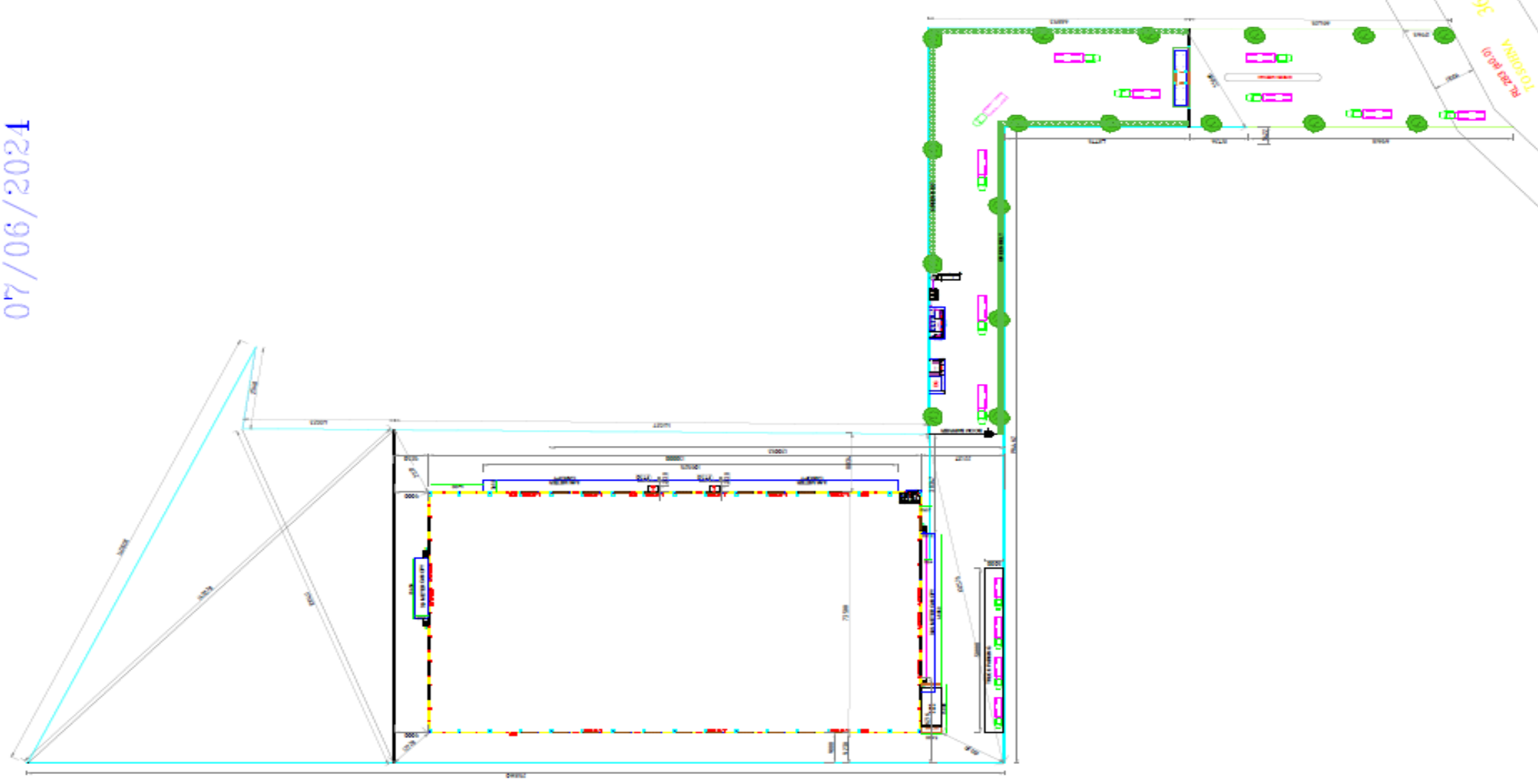
 Kirori modh Masjid

 M/s SLJ Logistic Solutions

 VSM Food Cold Chain And Processors LLP



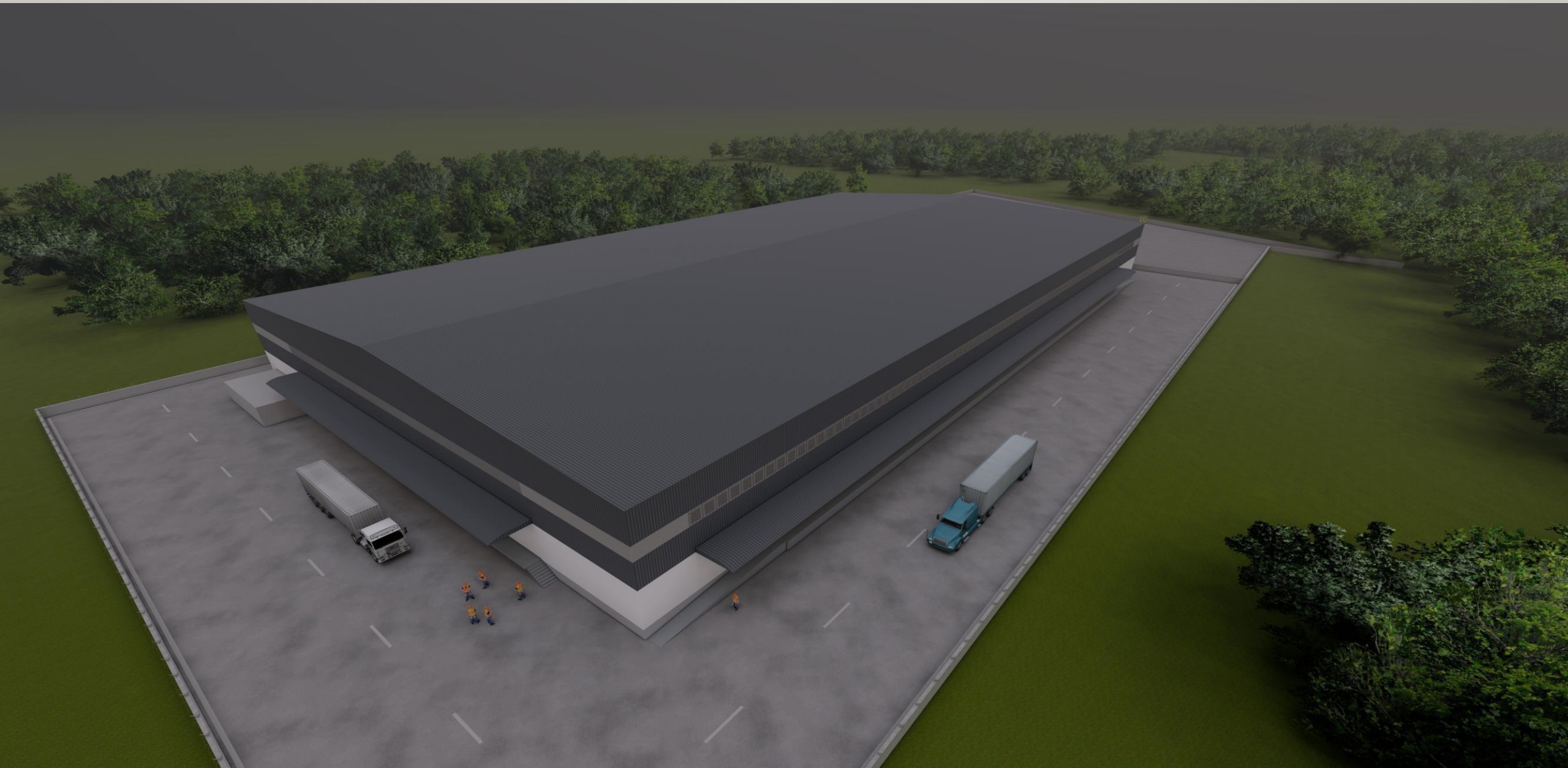
07/06/2024



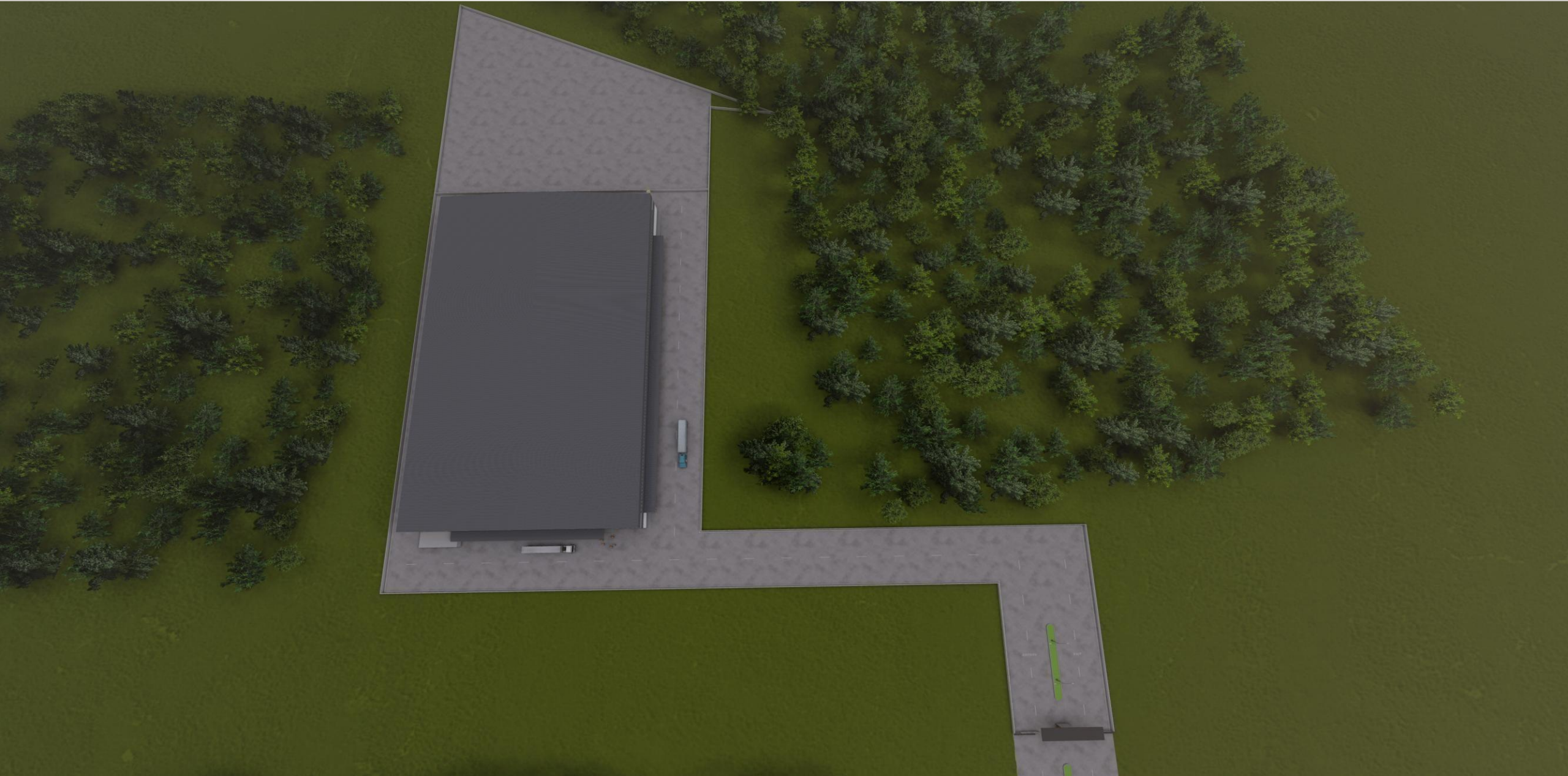
ABOUT THE PROJECT

Project Name	LOGISTIC PARK
Location	Sehsaula, Taoru, Haryana
Company Name	M/s SLJ Solution Logistics LLP
Land Area	29258.77 SQ.MT.
Building Height	13.25 Meter from Plinth Level
No. of Sheds	1 (Rectangular Single Entity)
No. of Docks	14
Google Pin	https://goo.gl/maps/MnB4P5hX88Ss3DYAA

PICTORIAL REPRESENTATION OF WAREHOUSE



AERIAL VIEW -3D







THANK YOU!

M/s SLJ SOLUTION LOGISTICS LLP

 **+91-9050905052**